

SID

CARTA DE SALIDA NORMALIZADA
 VUELO POR INSTRUMENTOS - OACI
 ICAO STANDARD INSTRUMENT DEPARTURE

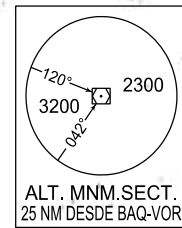
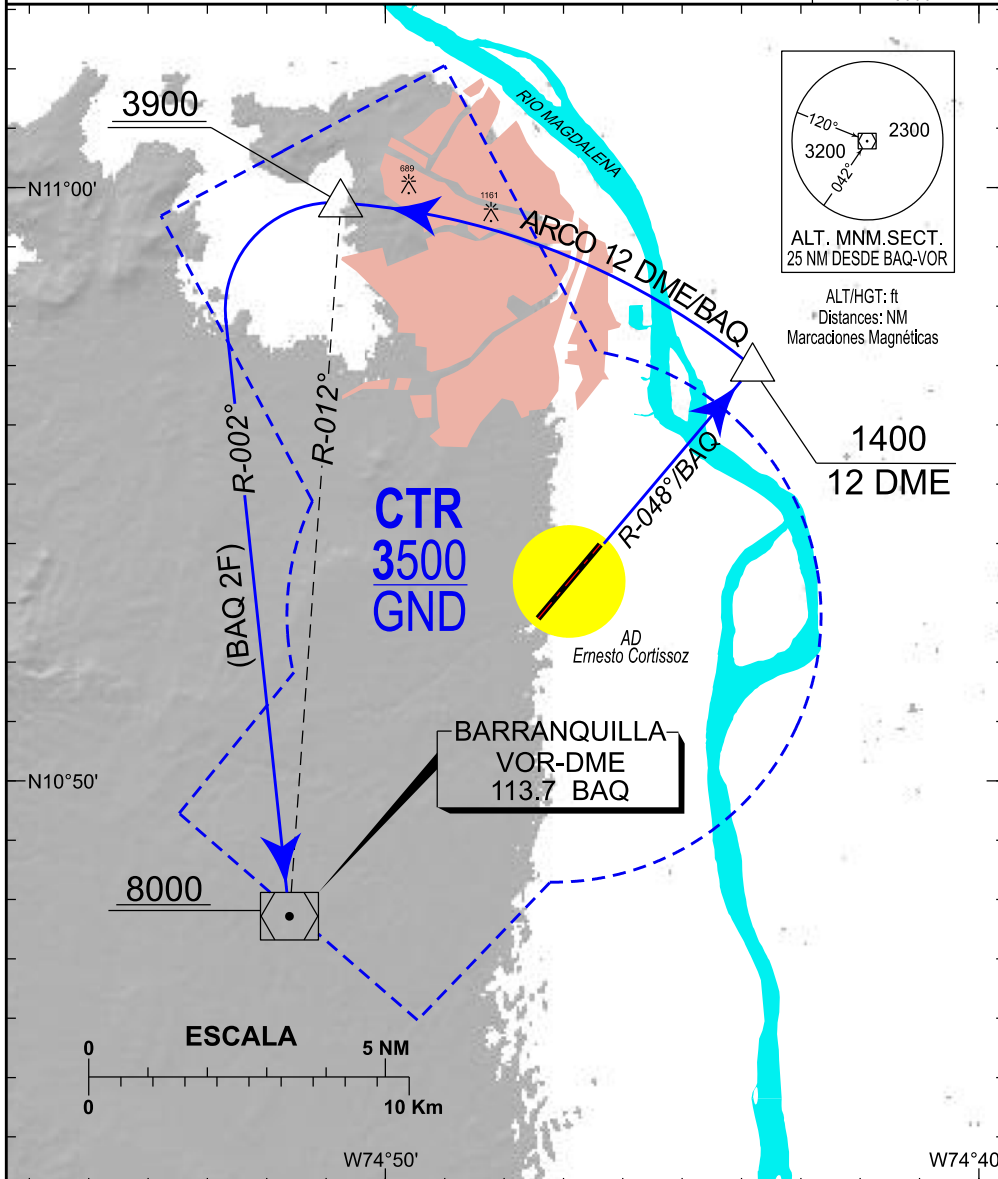
BARRANQUILLA
 ERNESTO CORTISOZ
 CAT: A/B/C/D
 RWY 05

BARRANQUILLA DOS FOXTROT [BAQ2F]

VAR/BAQ
 8° W/23

APP: BARRANQUILLA Aproximación Norte / North Approach: 119.10 MHz, ATIS 113.7 MHz.
 TWR: ERNESTO CORTISOZ / Tower: 118.1 MHz, ERNESTO CORTISOZ GND 121.9 MHz.

ALTITUD DE TRANSICION
 18000'



ALT. MNM. SECT.
 25 NM DESDE BAQ-VOR

ALT/HGT: ft
 Distances: NM
 Marcaciones Magnéticas



Gr. (%)	KTS	90	120	150	180	210	230	
PDG	5.7	ft/min	520	693	866	1039	1212	1328