

IAC

APROXIMACIÓN POR INSTRUMENTOS OACI

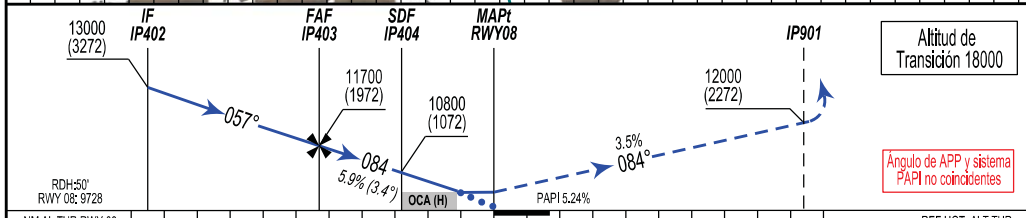
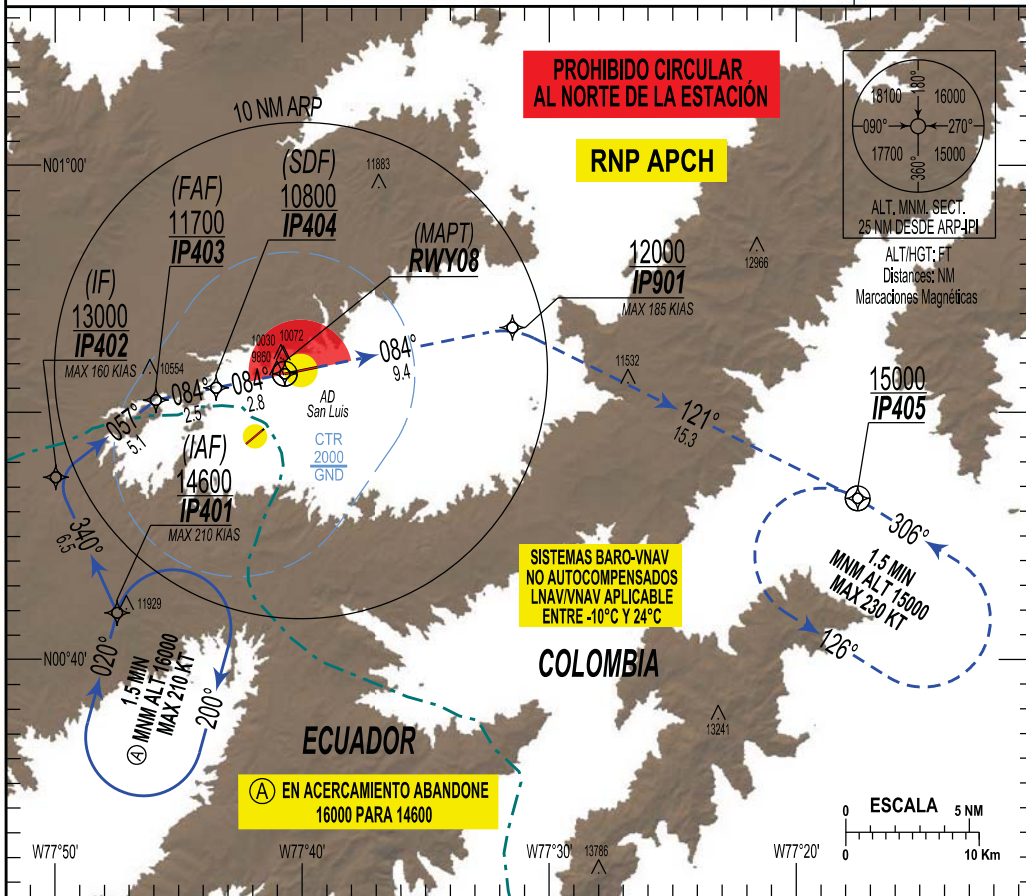
ICAO INSTRUMENT APPROACH

ELEV. AD: 9765, THR 08: 9728

IPIALES
SAN LUIS
CAT: A/B/C
RNP RWY 08

APP: ANDES Aproximación / Approach: 120.1 MHz.
TWR: SAN LUIS Torre / Tower: 118.3 MHz. CALI CONTROL 126.7 MHz.

VAR/ARP/IPI
5° W/23



APP FRUSTRADA: SIGA TRAYECTORIA RNP HACIA LA ESPERA DE IP405 Y 15000. RESTRICCIÓN CRUZAR IP901 12000 O SUP. PDG MNM. 3.5%

MISSED APPROACH: FOLLOW RNP TRACK TO IP405 HOLDING AND 15000. CROSS IP901 12000 OR ABOVE. PDG MNM 3.5%

| | LNAV | | LNAV/VNAV | | CIRCULAR CIRCLING | | MNM AD: Distancias verticales en pies y VIS en metros, Vertical distances in FT and VIS in meters. | | | | | | | | | | |
|----------|-------------|--------------------------|-----------|-------------|-------------------|-------------|--|------|------|------|------|-----------------------------------|----|-------|-------|-------|-------|
| | OCA (ft) | VISIBILIDAD CDFR/NO CDFR | OCA (ft) | VISIBILIDAD | OCA (ft) | VISIBILIDAD | FAF A MAPt 5.3 NM | | | | | ALTITUD VS DISTANCIA GNSS A THR08 | | | | | |
| A | | | | | 10320 (555) | 2900 | GS | 90 | 110 | 130 | 150 | 170 | NM | 5 | 4 | 3 | 2 |
| B | 10290 (562) | 2600 | 2800 | 10230 (502) | 2400 | | MIN:SEC | 3:33 | 2:54 | 2:27 | 2:08 | 1:53 | FT | 11684 | 11323 | 10962 | 10501 |
| C | | | 3000 | | 10800 (1035) | 5000 | FT/MIN | 540 | 660 | 780 | 900 | 1020 | | | | | |