

# IAC

APROXIMACIÓN POR INSTRUMENTOS OACI

ICAO INSTRUMENT APPROACH

ELEV. AD: 177, THR 07: 168

PUERTO CARREÑO

GERMAN OLANO

CAT: A/B/C

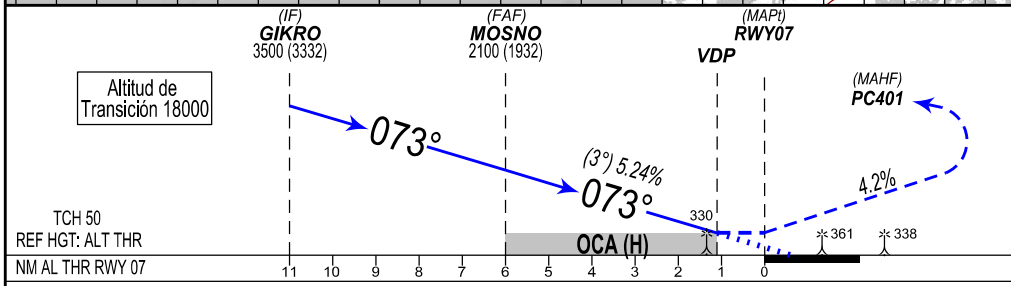
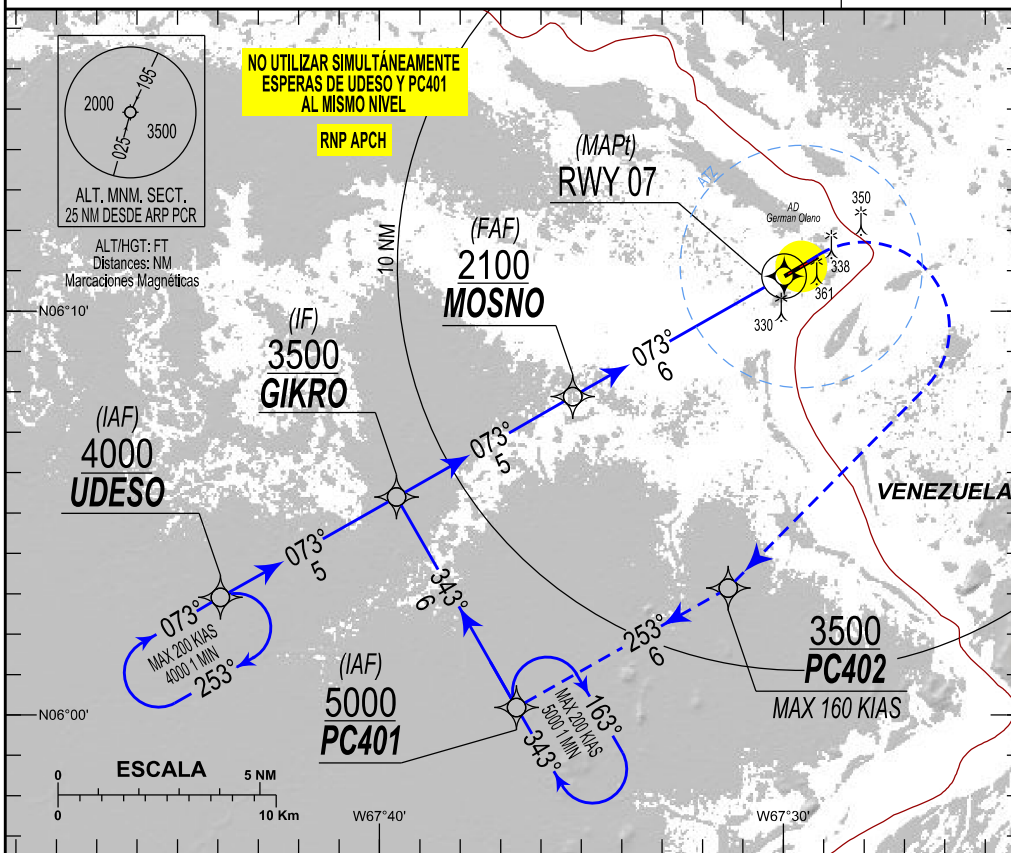
RNP RWY 07

APP: NIL

TWR: GERMAN OLANO Torre/Tower 118.35 MHz

VAR/ARP/PCR

12 °W/23



**APP FRUSTRADA:** SIGA TRAYECTORIA RNP HACIA ESPERA EN PC401 Y 5000 FT. PDG MNM 4.2%.

**MISSED APPROACH:** FOLLOW RNP TRACK TO HOLD PC401 AND 5000 FT. PDG MNM 4.2%.

C A T	LNAV DIRECTO <i>Straight in landing</i>		LNAV/VNAV *		CIRCULAR CIRCLING		MNM AD: Distancias verticales en pies y VIS en metros * Sistemas Baro-VNAV no autocompensados, LNAV/VNAV aplicables entre 10° C y 42° C MNM AD: Vertical distances in ft and VIS in meters. * Uncompensated Baro-VNAV systems, LNAV/VNAV Usable between 10° C and 42° C												
	OCA (H)	VISIBILIDAD	OCA (H)	VISIBILIDAD	MDA (H)	VISIBILIDAD	FAF A THR 6.0 NM					ALTITUD VS DISTANCIA AL THR 07							
A	590	2200	580	1900	1677	5000	GS	90	110	130	150	180	NM	6	5	4	3	2	
B	(422)	2400	(402)		(1500)		MIN:SEQ	4:00	3:16	2:46	2:24	2:00		FT	2100	1785	1472	1158	845
C							FT/MIN	470	570	680	780	940							