

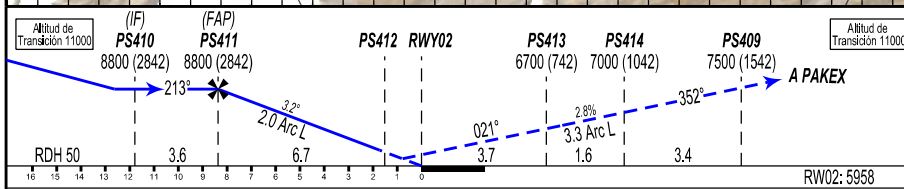
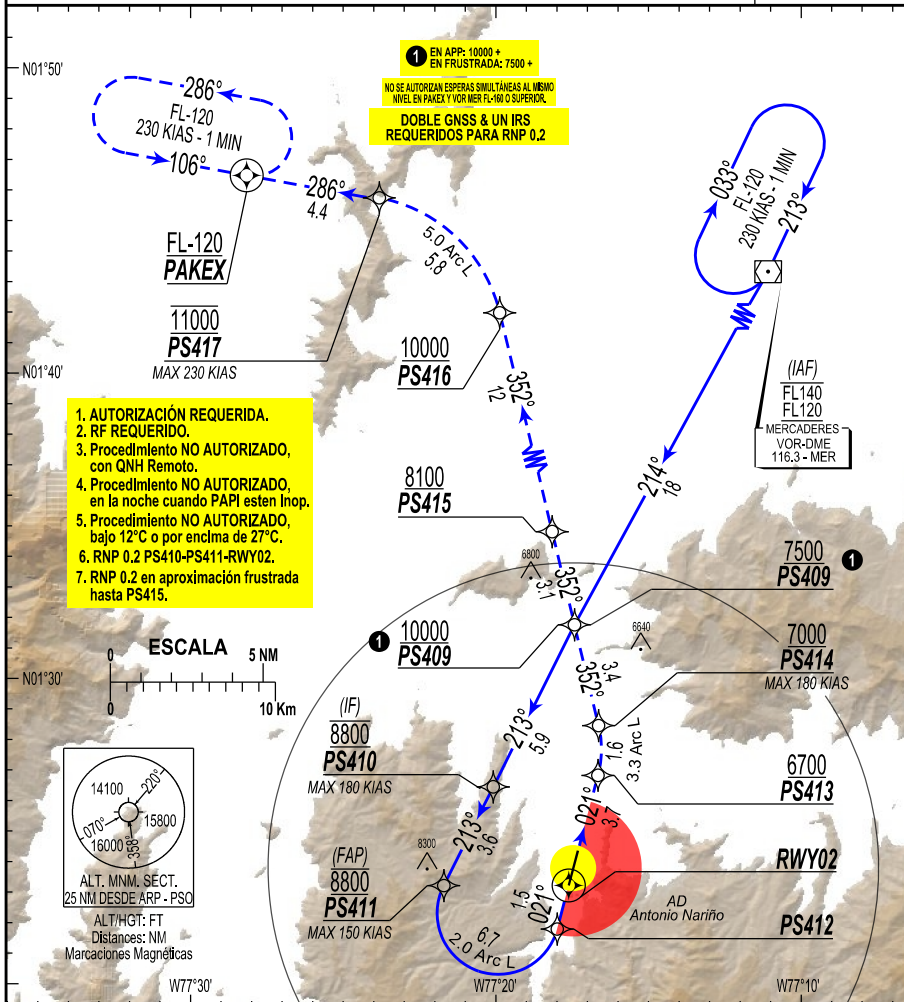
# IAC

APROXIMACIÓN POR INSTRUMENTOS OACI  
 ICAO INSTRUMENT APPROACH  
 ELEV. AD: 5958, THR 02: 5958

PASTO  
 ANTONIO NARIÑO  
 CAT: B/C  
 RNP RWY 02 (AR)

ACC CLO CONTROL: 126.7 MHz , 121.5 MHz  
 TWR: ANTONIO NARIÑO Torre/Tower 118.0 MHz

VAR/ARP/PSO  
 6°W/24



**APP FRUSTRADA:** SIGA LA TRAYECTORIA RNP HACIA LA ESPERA DE PAKEX EN ASCENSO A F120. PDG MNM 2.8%.

**MISSED APPROACH:** FOLLOW RNP TRACK TO PAKEX HOLDING PATTERN, CLIMBING TO F120. PDG MNM 2.8%.

| C<br>A<br>T | RNP 0.2    |             | Distancias verticales en pies y VIS (RVR) en metros.<br>Vertical distances in FT and VIS (RVR) in meters. |      |      |      |      |      |      |
|-------------|------------|-------------|---|------|------|------|------|------|------|
|             | OCA (H)    | VISIBILIDAD | GS  | 180  | 190  | 200  | 210  | 220  | 230  |
| B           | 6300 (342) | 1400        | FT/MIN (3.2°)   | 1019 | 1077 | 1135 | 1190 | 1247 | 1304 |

ESPERAS EN PAKEX Y VOR MER OBLIGADAS Y EVALUADAS CON CRITERIOS TERPS - FAA.  
 GRUPO TÉCNICO PROCEDIMIENTOS DE VUELO - ICAO